

BRAZOS RIVER FLOODGATES and COLORADO RIVER LOCKS (BRFG-CRL), TX

INLAND WATERWAYS USERS BOARD
MEETING NO. 101
October 19, 2023

Dr. Orlando Ramos-Gines, PMP, FE-3
Senior Project Manager
U.S. Army Corps of Engineers
Galveston District



Brazos River Crossing



Colorado River Crossing



U.S. ARMY



US Army Corps
of Engineers®

BRFG-CRL PROJECT – LOCAL, STATE, NATIONAL INTERESTS

- **GIWW is a high use waterway; Energy (Petro/Chemical and its derivatives)**
- **Upgrade infrastructure needed (constructed in the 1940s)**
- **Increase navigation industry efficiency:** Wider gate openings, realigned channels will allow wider tow/barge configurations, cross faster, eliminating/decreasing impact to navigation industry of \$10M+ per year, 2019 estimate
- **Increase safety:** Wider gate openings, realigned channels will eliminate/reduce collisions to gates significantly
- **Partnership efforts (GICA Captains involved; Briefings to local, state, federal governments; External stakeholder briefings)**
- **High Benefit-to-Cost Ratio (2.11 BRC; 0.58 CRC; 1.24 BRC & CRC; FY22 economics update @ 7% discount rate)**
- **Category # 2 project (authorized & awaiting construction funds)**



Tows must break into a single row of barges to pass narrow gates opening which creates substantial economic impacts to the industry translating into local, state, and national economic impacts.



US Army Corps
of Engineers®

BRFG – ENTIRE FACILITY DESIGN (WEST & EAST) – CURRENT STATUS

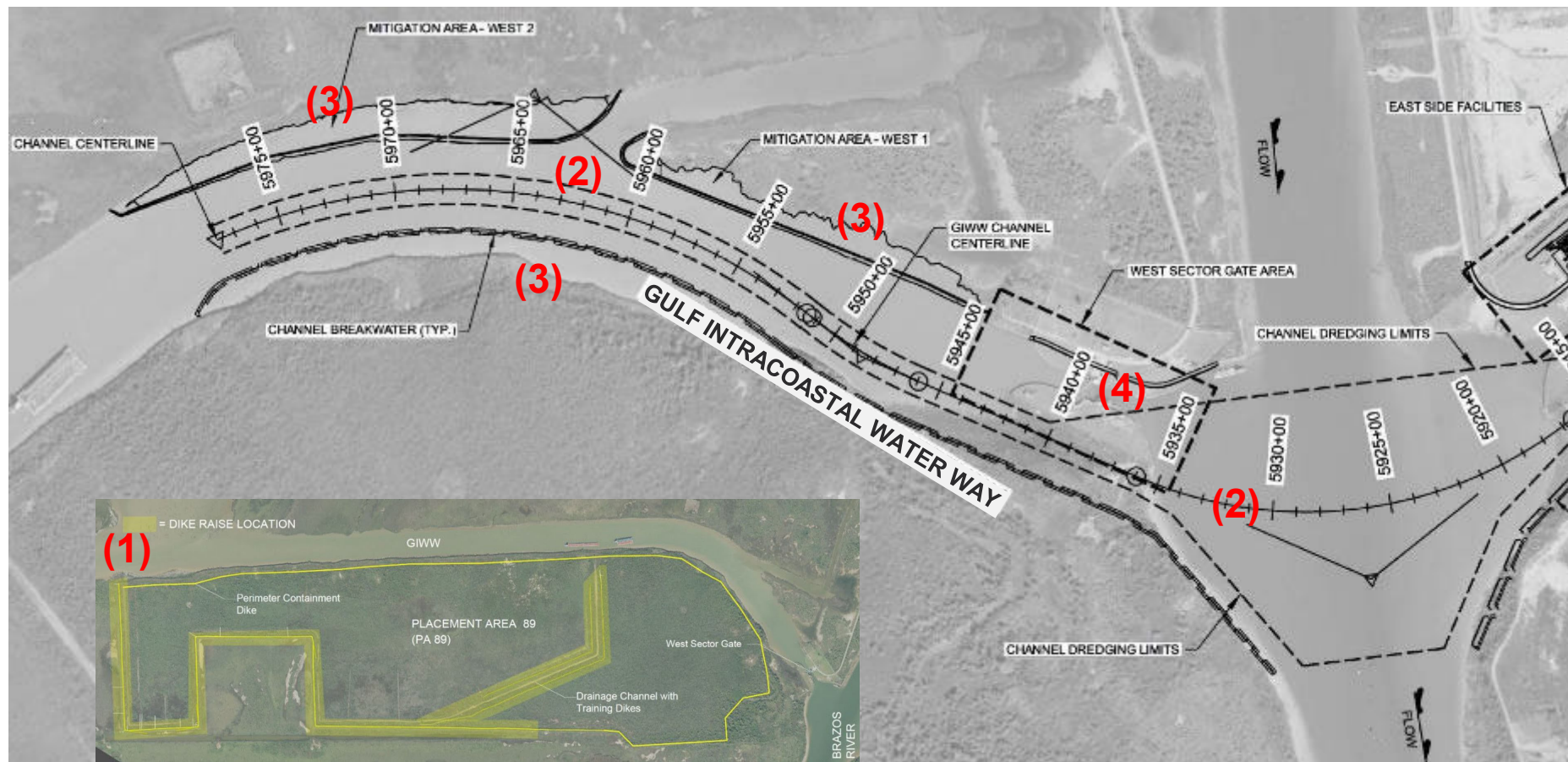
3

- Quality assurance reviews of final design package completed
- Agency Technical Review Certification achieved
- Final A-E submittal due 13 Oct 2023

NOTE: Final A-E submittal is a fully reviewed design package for the entire facility, which will be used to extract / repackage for the westside only contract features when construction funds are made available.

BRFG – WESTSIDE ONLY: FEATURES

- (1) Placement Area 89 Levee Raise (3 ft) and Interior Drainage Improvements
- (2) Westside New Channel and Crossing Dredging (EL -16FT authorized depth)
- (3) Westside Mitigation Areas
- (4) Westside Structures Demolition



BRFG – WESTSIDE ONLY: SCHEDULE & COST

ESTIMATE

Westside Only Activity	Cost Range	FY24												FY25												FY26												FY27											
		O	N	D	J	F	M	A	M	J	J	A	S	O	N	D	J	F	M	A	M	J	J	A	S	O	N	D	J	F	M	A	M	J	J	A	S	O	N	D	J	F	M	A	M	J	J	A	S
Receive of Funds	\$71M - \$81.2M																																																
AE Task Order Solicitation (contract & labor)	\$500K - \$550K																																																
Design Repackage & Reviews (labor)	\$435K - \$580K																																																
Construction Contract Solicitation (labor)	\$60K - \$70K																																																
Construction of BRFG Westside (contract & labor)	\$70M - \$80M																																																

Colorado River Locks



Brazos River Flood Gates



Tows must break into a single row of barges to pass narrow gates opening which creates substantial economic impacts to the industry (\$10M+, 2019 price level) translating into local, state, and national economic impacts.



U.S. ARMY



US Army Corps
of Engineers®